

Our Ref : BCA SGO 003/2012

Building Engineering Division (#05-00)  
Fax : 6325 7482  
DID : 6325 7571  
E-mail : yang\_kin\_seng@bca.gov.sg

21 January 2013

See **Distribution List**

Dear Sir/Madam

**IMPLEMENTATION OF SITE INVESTIGATION DATA IN STANDARDISED ELECTRONIC FORMAT**

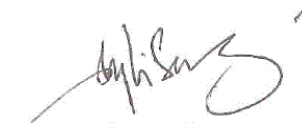
Presently, it is not common for site investigation (SI) data to be prepared and submitted in electronic format. The BCA's Singapore Geological Office (SGO) has therefore initiated and prepared a standardised electronic format which is based on the needs and practices in Singapore. This is to enable and facilitate the ease and seamless transfer, interchange, storage, retrieval, sharing and use of SI data in a standardised electronic format. Last year, BCA held a series of dialogue sessions with government agencies and site investigation firms on the standardization of SI data in electronic format. SGO is pleased to inform the industry that the '*Guidelines on Electronic Transfer for Site Investigation Data*' which covers Singapore first standardised electronic file format protocol AGS(SG) for the geological, geotechnical, geo-environmental, geophysical field and laboratory testing data is ready and can be downloaded from the BCA website at the following link:

[http://www.bca.gov.sg/StructuralPlan/others/Electronic\\_transfer\\_SI\\_data.pdf](http://www.bca.gov.sg/StructuralPlan/others/Electronic_transfer_SI_data.pdf).

2 We wish to inform the industry that the submission of SI data in the AGS(SG) electronic format will be a requirement **with effective from 1<sup>st</sup> July 2013 for all new projects**. An example on the labelling requirements of the electronic files for the Site Investigation report and data file in AGS(SG) format is shown in Annex A.

3 I would appreciate it if you could disseminate the contents of this letter to your members.

Yours faithfully

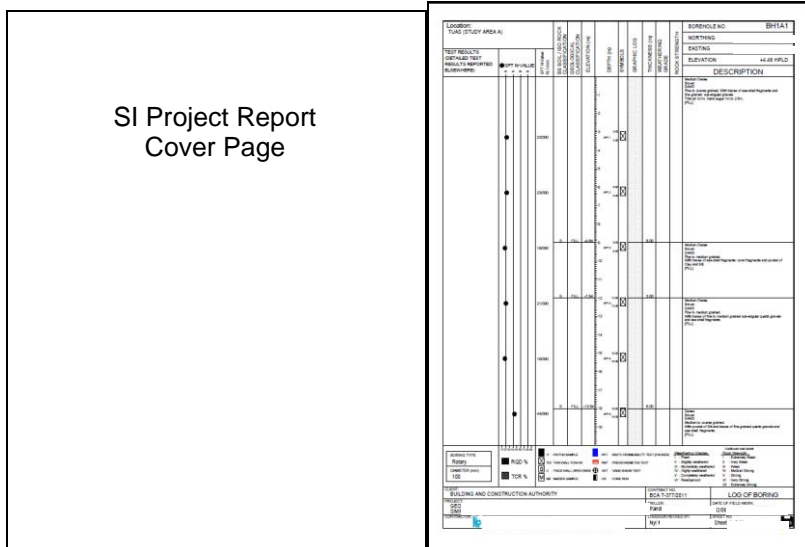


YANG KIN SENG  
DIRECTOR  
BUILDING ENGINEERING DIVISION  
for COMMISSIONER OF BUILDING CONTROL  
BUILDING AND CONSTRUCTION AUTHORITY

## ANNEX A

An example of a submission format for Site Investigation (SI) report:

a) Site Investigation report (pdf format)



Example of labelling of SI report file: **SGO\_SI\_XXXXX.pdf**

b) Site Investigation data in AGS(SG) format  
(to be appended as an Annex of SI report)

```

***PROJ*
**PROJ_ID**,**PROJ_NAME**,**PROJ_LOC**,**PROJ_CLNT**,**PROJ_CONT**,**PROJ_ENG**,**PROJ_MEMO**,**FILE_FSET**,**PROJ_CID**,**PROJ_PROD**,**PROJ_R
ECV**,**PROJ_ISNO**,**PROJ_STAT**,**PROJ_AGS**,**PROJ_DATE**
<UNITS>:,"m","dd/mm/yyyy"
"BCA 2011","Geological Survey and Investigation Work at Tuas, Simpang and Seletar","Seletar","Building and Construction Authority","BCA 2011","Consultants
Co., Ltd."
<CONT>:,"Consultants Co., Ltd.,""D","3.1","14/08/2012"

***DICT*
**DICT_TYPE**,**DICT_GRP**,**DICT_PGRP**,**DICT_HDNG**,**DICT_STAT**,**DICT_DESC**,**DICT_UNIT**,**DICT_EXMP**
"HEADING":DICT,"DICT_PGRP","COMMON","Parent Group Name","HOLE"
"HEADING":PROJ,"PROJ_CID","COMMON","Monitoring Contractor Identifier","123"
"HEADING":PROJ,"PROJ_PROD","COMMON","Data File Producer","Drilling Ltd"
"HEADING":PROJ,"PROJ_RECV","COMMON","Data File Recipient","Consulting"
"HEADING":PROJ,"PROJ_ISNO","COMMON","Issue Sequence Number","2"
"HEADING":PROJ,"PROJ_STAT","COMMON","Status of data within submission","2"
"HEADING":CORE,"CORE_FI","COMMON","Fracture Index, FI"
"HEADING":GEOL,"GEOL_GEO3","COMMON","Third geology code"
"HEADING":HDIA,"HDIA_REM","COMMON","Hole Diameter Remarks","Reduced drill size due to excessive torque"
"HEADING":ISPT,"ISPT_SWP","COMMON","Self Weight Penetration","mm","25"
"HEADING":ISPT,"ISPT_REF","COMMON","SPT Ref No"
"HEADING":SAMP,"SAMP_TEST","COMMON","Test results on the samples","cu = 50kPa; c= 10kPa"
"HEADING":WETH,"WETH_STRG","COMMON","Rock Strength","IV"

***UNIT*
**UNIT_UNIT**,**UNIT_DESC**
"m","metre"
"dd/mm/yyyy","day month year"
"deg","degree (angle)"
"%","percentage"
"mm","millimetre"
"hmmss","hours minutes seconds"
"kPa","kiloPascal"
"DegC","degree Celsius"
"l/min","litres per minute"

***ABBR*
**ABBR_HDNG**,**ABBR_CODE**,**ABBR_DESC**
"HOLE_TYPE","RC","Rotary cored"
"GEOL_LEG","404","GRAVELLY SAND"
    
```

Example of labelling of AGS data file: **SGO\_SI\_XXXXX.ags**

Note: All SI reports & related documents should be labelled as '**SGO\_SI**' in the prefix and XXXXX refer to project name or project site location.

**DISTRIBUTION (via e-mail):**

**AGENCIES**

DIRECTOR  
BEST SOURCING DEPARTMENT  
PUBLIC UTILITIES BOARD  
40 SCOTTS ROAD #18-01  
ENVIRONMENT BUILDING  
SINGAPORE 228231  
[koh\\_boon\\_aik@pub.gov.sg](mailto:koh_boon_aik@pub.gov.sg)

ASSISTANT DIRECTOR  
PROJECT MANAGEMENT B  
BEST SOURCING DEPARTMENT  
PUBLIC UTILITIES BOARD  
40 SCOTTS ROAD #18-01  
ENVIRONMENT BUILDING  
SINGAPORE 228231  
[Lee\\_how\\_hay@pub.gov.sg](mailto:Lee_how_hay@pub.gov.sg)

ASSISTANT DIRECTOR  
PLANNING  
WATER RECLAMATION (NETWORK) DEPARTMENT  
PUBLIC UTILITIES BOARD  
40 SCOTTS ROAD #18-01  
ENVIRONMENT BUILDING  
SINGAPORE 228231  
[Tan\\_chee\\_hoon@pub.gov.sg](mailto:Tan_chee_hoon@pub.gov.sg)

DIRECTOR  
INFRASTRUCTURE & RECLAMATION DEPARTMENT  
BUILDING & INFRASTRUCTURE GROUP  
HOUSING & DEVELOPMENT BOARD  
HDB HUB  
480 LORONG 6 TOA PAYOH  
SINGAPORE 310480  
[cke1@hdb.gov.sg](mailto:cke1@hdb.gov.sg)

DEPUTY DIRECTOR  
INFRASTRUCTURE & RECLAMATION DEPARTMENT  
BUILDING INFRASTRUCTURE GROUP  
HOUSING & DEVELOPMENT BOARD  
HDB HUB  
480 LORONG 6 TOA PAYOH  
SINGAPORE 310480  
[nkc2@hdb.gov.sg](mailto:nkc2@hdb.gov.sg)

DEPUTY DIRECTOR  
PROJECT DEVT & MGT SECT 1 (C&S)  
BUILDING QUALITY GROUP  
HOUSING & DEVELOPMENT BOARD  
HDB HUB  
480 LORONG 6 TOA PAYOH  
SINGAPORE 310480

[hkc1@hdb.gov.sg](mailto:hkc1@hdb.gov.sg)

DEPUTY DIRECTOR  
PROJECT MANAGEMENT  
CONSERVATION AND URBAN DESIGN GROUP  
URBAN REDEVELOPMENT AUTHORITY  
45 MAXWELL ROAD  
THE URA CENTRE  
SINGAPORE 069118  
[loo\\_pak\\_chai@ura.gov.sg](mailto:loo_pak_chai@ura.gov.sg)

DIRECTOR  
ENGINEERING PLANNING DIVISION  
JTC CORPORATION  
THE JTC SUMMIT  
8 JURONG TOWN HALL ROAD  
SINGAPORE 609434  
[chwee.koh@jtc.gov.sg](mailto:chwee.koh@jtc.gov.sg)

DIRECTOR  
PROJECT MANAGEMENT & CONTRACTS DIVISION  
JTC CORPORATION  
THE JTC SUMMIT  
8 JURONG TOWN HALL ROAD  
SINGAPORE 609434  
[giokhua.png@jtc.gov.sg](mailto:giokhua.png@jtc.gov.sg)

DEPUTY CHIEF EXECUTIVE  
INFRASTRUCTURE & DEVELOPMENT  
LAND TRANSPORT AUTHORITY  
1 HAMPSHIRE ROAD  
BLOCK 8 LEVEL 1  
SINGAPORE 219428  
[chong\\_kheng\\_chua@lta.gov.sg](mailto:chong_kheng_chua@lta.gov.sg)

MANAGER  
CIVIL DESIGN DIVISION  
ENGINEERING GROUP  
LAND TRANSPORT AUTHORITY  
1 HAMPSHIRE ROAD  
BLOCK 8 LEVEL 1  
SINGAPORE 219428  
[leyatharan\\_kumarasamy@lta.gov.sg](mailto:leyatharan_kumarasamy@lta.gov.sg)

DIRECTOR  
PROTECTIVE INFRASTRUCTURE & ESTATE  
DEFENCE SCIENCE & TECHNOLOGY AGENCY  
1 DEPOT ROAD #03-01J  
SINGAPORE 109679  
[lcheehio@dsta.gov.sg](mailto:lcheehio@dsta.gov.sg)

HEAD OF CAVERN FACILITIES AND ROCK ENGINEERING  
PROTECTIVE INFRASTRUCTURE & ESTATE  
DEFENCE SCIENCE & TECHNOLOGY AGENCY  
1 DEPOT ROAD #03-01J  
SINGAPORE 109679  
[zyingxin@dsta.gov.sg](mailto:zyingxin@dsta.gov.sg)

ASSISTANT DIRECTOR  
TECHNOLOGY DIVISION  
MARITIME AND PORT AUTHORITY OF SINGAPORE  
460 ALEXANDRA ROAD  
#17-00 PSA BUILDING  
SINGAPORE 119963  
[tiancheng\\_song@mpa.gov.sg](mailto:tiancheng_song@mpa.gov.sg)

### **ASSOCIATIONS / SOCIETIES**

PRESIDENT  
INSTITUTION OF ENGINEERS, SINGAPORE (IES)  
70, BUKIT TINGGI ROAD  
SINGAPORE 289758  
[ies@iesnet.org.sg](mailto:ies@iesnet.org.sg)

PRESIDENT  
ASSOCIATION OF CONSULTING ENGINEERS, SINGAPORE (ACES)  
18 SIN MING LANE  
#06-01 MIDVIEW CITY  
SINGAPORE 573960  
[secretariat@aces.org.sg](mailto:secretariat@aces.org.sg)

PRESIDENT  
SINGAPORE CONTRACTORS ASSOCIATION LIMITED (SCAL)  
CONSTRUCTION HOUSE  
1 BUKIT MERAH LANE 2  
SINGAPORE 159760  
[enquiry@scal.com.sg](mailto:enquiry@scal.com.sg)

PRESIDENT  
SINGAPORE INSTITUTE OF ARCHITECTS (SIA)  
79 NEIL ROAD  
SINGAPORE 088904  
[info@sia.org.sg](mailto:info@sia.org.sg)

PRESIDENT  
SOCIETY OF PROJECT MANAGERS (SPM)  
MACPHERSON ROAD P.O.BOX 1083  
SINGAPORE 913412  
[sprojm@yahoo.com](mailto:sprojm@yahoo.com)

PRESIDENT  
SINGAPORE INSTITUTE OF BUILDING LIMITED (SIBL)  
70 PALMER ROAD,  
#03-09C PALMER HOUSE  
SINGAPORE 079427  
[josephine@sib.com.sg](mailto:josephine@sib.com.sg)

PRESIDENT  
REAL ESTATE DEVELOPERS' ASSOCIATION OF SINGAPORE (REDAS)  
190 CLEMENCEAU AVENUE  
#07-01 SINGAPORE SHOPPING CENTRE  
SINGAPORE 239924  
[enquiry@redas.com](mailto:enquiry@redas.com)

PRESIDENT  
SINGAPORE INSTITUTE OF SURVEYORS & VALUERS (SISV)  
110 MIDDLE ROAD #09-00  
CHIAT HONG BUILDING  
SINGAPORE 188968  
[sisv.info@sisv.org.sg](mailto:sisv.info@sisv.org.sg)

PRESIDENT  
SINGAPORE STRUCTURAL STEEL SOCIETY (SSSS)  
1 LIANG SEAH STREET  
#02-11/12 LIANG SEAH PLACE  
SINGAPORE 189022  
[secretariat@ssss.org.sg](mailto:secretariat@ssss.org.sg)

PRESIDENT  
GEOTECHNICAL SOCIETY OF SINGAPORE  
C/O PROFESSIONAL ACTIVITIES CENTRE  
NUS FACULTY OF ENGINEERING  
9 ENGINEERING DRIVE 1  
SINGAPORE 117576  
[geoss@nus.edu.sg](mailto:geoss@nus.edu.sg)

PRESIDENT  
PROFESSIONAL ENGINEERS BOARD, SINGAPORE (PEB)  
1ST STOREY, TOWER BLOCK, MND COMPLEX  
5 MAXWELL ROAD  
SINGAPORE 069110  
[registrar@peb.gov.sg](mailto:registrar@peb.gov.sg)

PRESIDENT  
BOARD OF ARCHITECTS (BOA)  
5 MAXWELL ROAD  
1ST STOREY TOWER BLOCK  
MND COMPLEX  
SINGAPORE 069110  
[boarch@singnet.com.sg](mailto:boarch@singnet.com.sg)

DIRECTOR  
PROTECTIVE INFRASTRUCTURE & ESTATE  
DEFENCE SCIENCE & TECHNOLOGY AGENCY  
1 DEPOT ROAD #03-01J  
SINGAPORE 109679  
[lcheehio@dsta.gov.sg](mailto:lcheehio@dsta.gov.sg)

DEPUTY DIRECTOR  
PROJECT DEVELOPMENT & MAINTENANCE BRANCH  
MINISTRY OF EDUCATION  
1 NORTH BUONA VISTA DRIVE  
OFFICE TOWER LEVEL 9  
SINGAPORE 138675  
[eng\\_wee\\_tong@moe.gov.sg](mailto:eng_wee_tong@moe.gov.sg)

DIRECTOR  
BEST SOURCING DEPARTMENT  
PUBLIC UTILITIES BOARD

40 SCOTTS ROAD #18-01  
ENVIRONMENT BUILDING  
SINGAPORE 228231  
[koh\\_boon\\_aik@pub.gov.sg](mailto:koh_boon_aik@pub.gov.sg)

DEPUTY CHIEF EXECUTIVE  
INFRASTRUCTURE & DEVELOPMENT  
LAND TRANSPORT AUTHORITY  
1 HAMPSHIRE ROAD  
BLOCK 8 LEVEL 1  
SINGAPORE 219428  
[bok\\_ngam\\_lim@lta.gov.sg](mailto:bok_ngam_lim@lta.gov.sg)

HEAD  
TECHNICAL RESOURCE  
BUILDING QUALITY DEPARTMENT  
HOUSING & DEVELOPMENT BOARD  
HDB HUB  
480 LORONG 6 TOA PAYOH  
SINGAPORE 310480  
[hkc1@hdb.gov.sg](mailto:hkc1@hdb.gov.sg)

DIRECTOR  
ENGINEERING PLANNING DIVISION  
JTC CORPORATION  
THE JTC SUMMIT  
8 JURONG TOWN HALL ROAD  
SINGAPORE 609434  
[chwee.koh@jtc.gov.sg](mailto:chwee.koh@jtc.gov.sg)

DIRECTOR  
BUILDING  
PEOPLE'S ASSOCIATION  
9 STADIUM LINK  
SINGAPORE 397750  
[foo\\_soon\\_leng@pa.gov.sg](mailto:foo_soon_leng@pa.gov.sg)

PRESIDENT  
THE TUNNELLING AND UNDERGROUND  
CONSTRUCTION SOCIETY SINGAPORE (TUCSS)  
C/O CMA INTERNATIONAL CONSULTANTS PTE LTD  
1 LIANG SEAH STREET  
#02-12 LIANG SEAH PLACE  
SINGAPORE 189022  
[info@tucss.org.sg](mailto:info@tucss.org.sg)

PRESIDENT  
SOCIETY OF ROCK MECHANICS AND ENGINEERING GEOLOGY  
1 LIANG SEAH STREET  
#02-12 LIANG SEAH PLACE  
SINGAPORE 189022  
[srmeq@cma.sg](mailto:srmeq@cma.sg)

ALL CORENET E-INFO SUBSCRIBERS

**CONTRACTORS**

ALL Specialist Builder (Site Investigation Work)